

# Federal Reserve System

## File Transfer Of STAT Data Files Via IESUB

### User Guide

STATISTICS FUNCTION  
AUTOMATION SUPPORT

January 27, 2003

## Overview

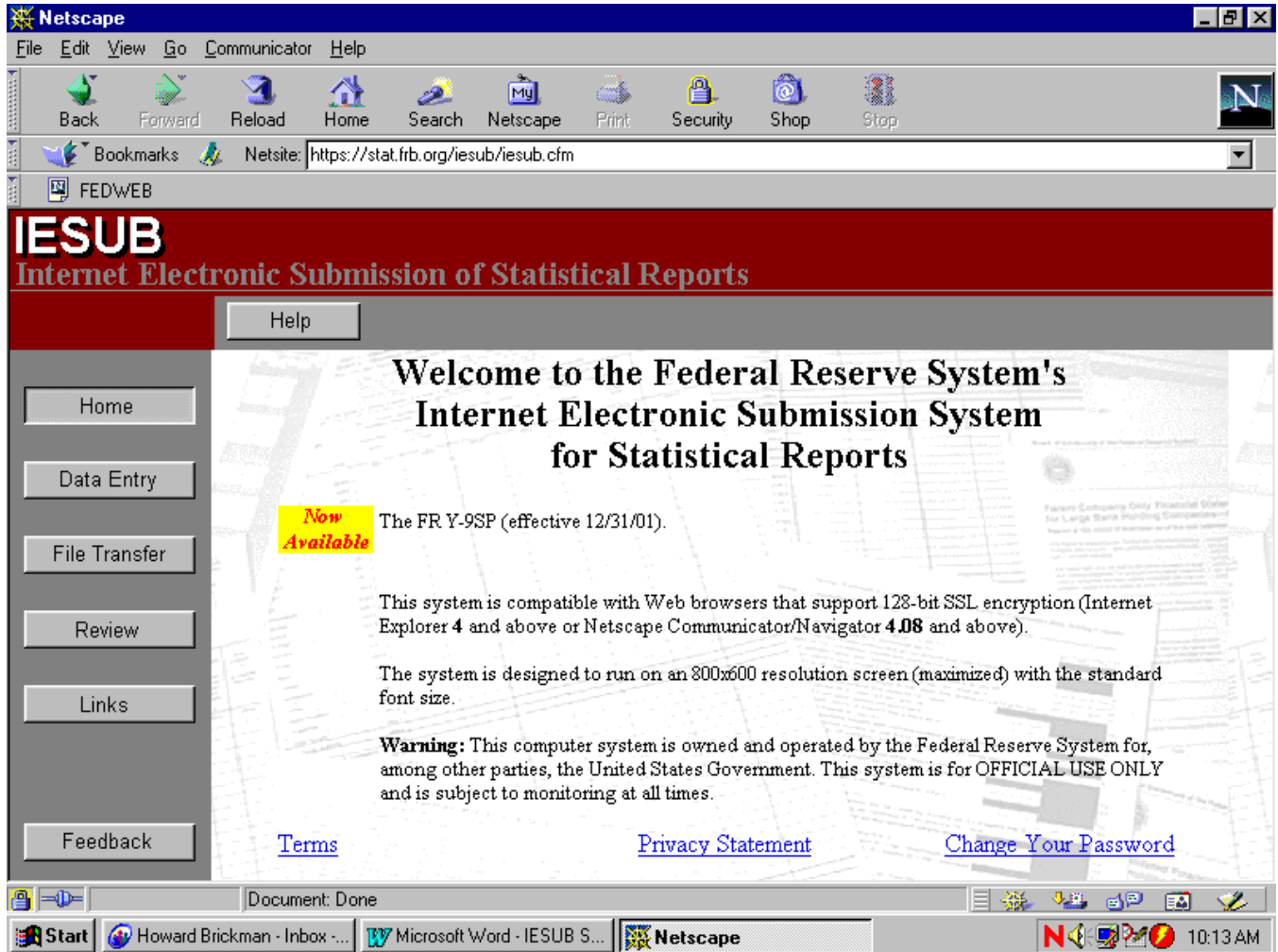
The Federal Reserve System's Internet Electronic Submission (IESUB) Web Site includes the ability to accept STAT data files. STAT data files are the files you may have previously been submitting through FedLine. This feature enables depository institutions to submit their Bank Holding Company (FR Y-8, FRY-9C, FRY-9CS, FRY-9LP, FRY-9SP, FRY-11I, and FRY-11Q), FFIEC 002/002S, FR 2900 and FR 2950/51 report data files over the Internet. Many vendor-developed deposit and regulatory reporting applications can create these files for you.

The application level specifications for the data files, along with the detailed data content specifications for each report that can use this file transfer feature, are described in the Banking Statistics (STAT) section of the Computer Interface Protocol Specifications (CIPS) document. Unlike files containing data in the IESUB Spreadsheet Transfer file format, IESUB will not populate a data entry screen or perform validation checking of the data within the file. When a depository institution submits a file in the STAT file format, IESUB will accept the file, provide the depository institution with a receipt containing the date and time that IESUB received the file and forward the file to the Federal Reserve's Statistics and Reserves application.

This document demonstrates how to use the IESUB file transfer option to submit STAT data files.

## IESUB STAT File Transfer Procedure

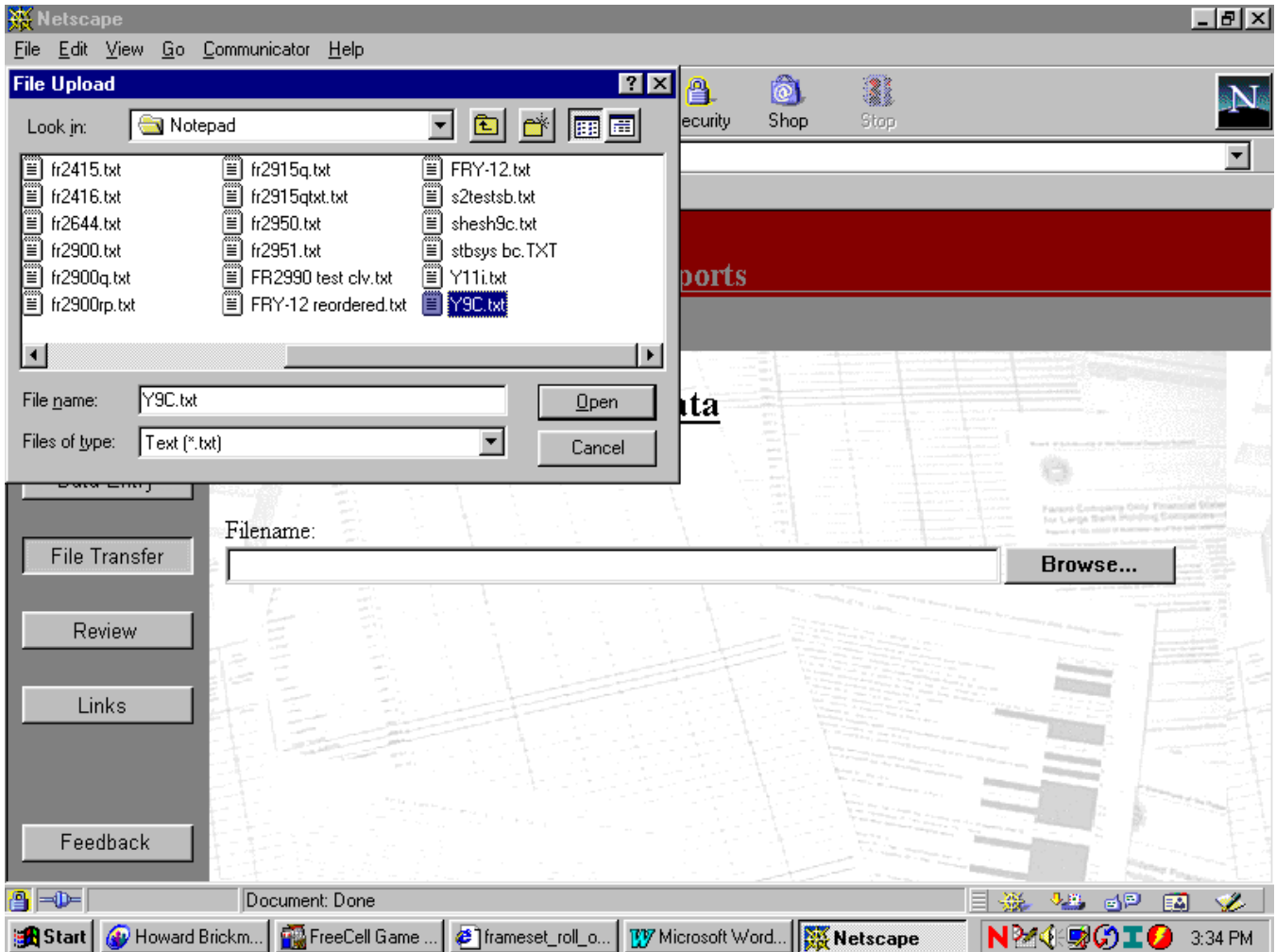
**Step 1)** Click on the **File Transfer** button to get the web page for submitting the STAT file.



**Figure 1: IESUB File Transfer**

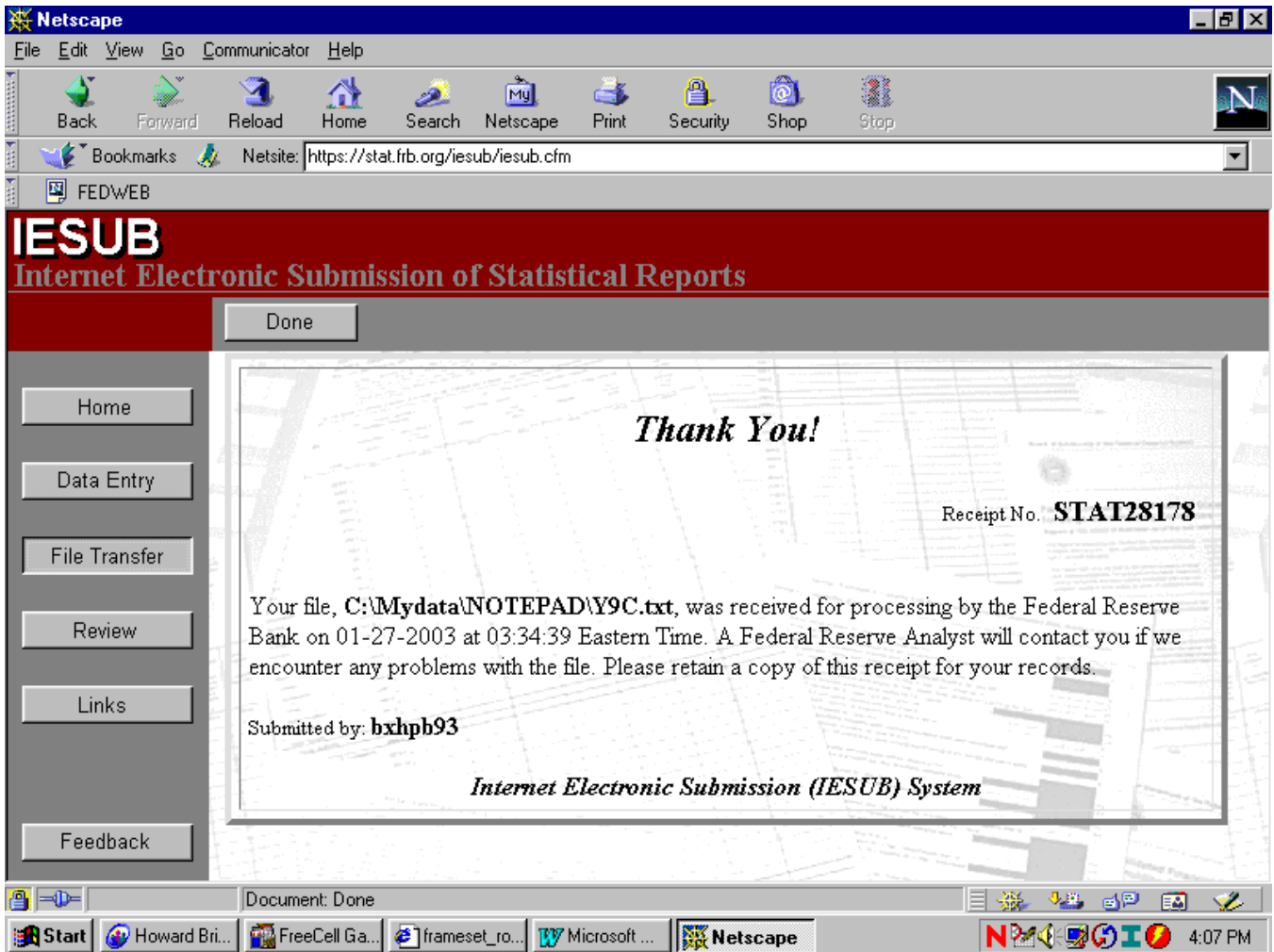
**Step 2)** Enter the name and path of your file in the **Filename:** text box. You can click on the **Browse...** button to locate your file. (When you click on the **Browse** button, you will open the Windows directory file locator. Navigate the folders, select the file, and click on the **Open** button to fill in the **Filename:** text box.)

**Note:** The file you are submitting must have a txt file extension (\*.txt).



**Figure 2 - Browse for Text File**

**Step 3)** Click on the **Submit File** button to transfer your file to the IESUB system. IESUB will display a receipt specifying the date and time it received the file.



**Figure 3 – Receipt page**

**Step 4)** Print a copy of the receipt and keep it for your records.